

Anti-ACVR2B hIgG1 Antibody(Fab-17G05)

Product information

GM-82350AB-10	10 µg
GM-82350AB-100	100 µg
GM-82350AB-1000	1 mg

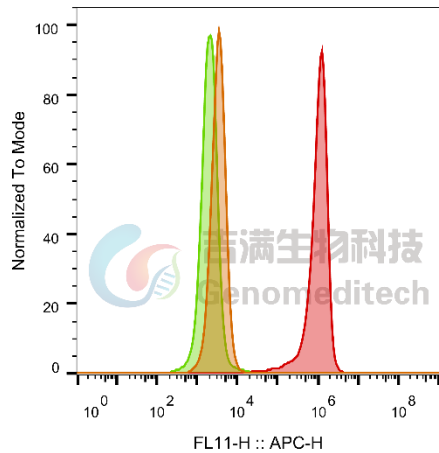
Antibody Information

Species Reactivity	Human
Clone	Fab-17G05
Source/Isotype	Monoclonal Human IgG1/k
Application	Flow Cytometry
Specificity	Detects ACVR2B
Gene	ACVR2B
Other Names	HTX4; ACTRIIB; ActR-IIB
Gene ID	Q13705
Background	ACVR2B is an activin type 2 receptor. Activins are dimeric growth and differentiation factors which belong to the transforming growth factor-beta (TGF-beta) superfamily of structurally related signaling proteins. Activins signal through a heteromeric complex of receptor serine kinases which include at least two type I (I and IB) and two type II (II and IIB) receptors. ACVR2B binds to activin and growth differentiation factor (GDF), which in turn activates type I receptors and activates downstream molecules. In addition, mutations in this gene may affect protein function in left and right axis formation and cardiovascular development, as well as reduce muscle mass and bone mass.
Storage	Store at 2-8°C short term (1-2 weeks). Store at ≤ -20°C long term. Avoid repeated freeze-thaw.
Formulation	Phosphate-buffered solution, pH 7.2.
Endotoxin	< 1 EU/mg, determined by LAL gel clotting assay

Data Examples

Flow cytometry

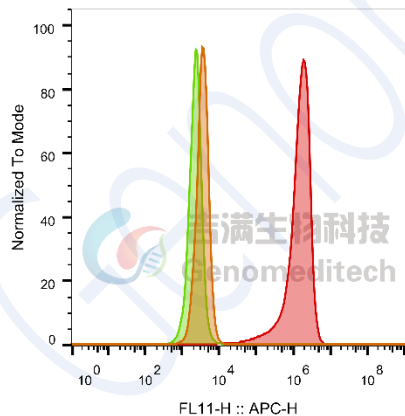
The recommended usage range is 0.5-4 µg per test. H_ACVR2B Reporter Cell Line (Catalog # GM-C26076) was stained with Anti-ACVR2B hlgG1 Antibody(Fab-17G05) (Catalog # GM-82350AB) or isotype control antibody, followed by anti-Human IgG APC-conjugated Secondary Antibody.



SampleID	Geometric Mean : FL11-H
Null anti-ACVR2B+APC-2nd Ab	3371
H_ACVR2B Reporter H_IgG+APC-2nd Ab	2035
H_ACVR2B Reporter anti-ACVR2B+APC-2nd Ab	9.70E5

Flow cytometry

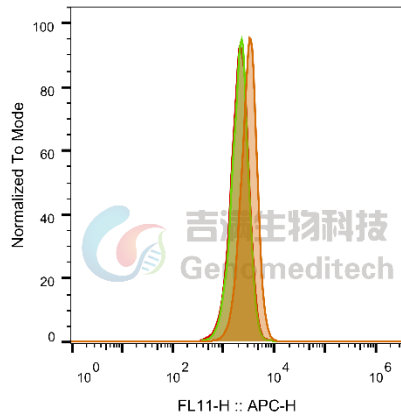
The recommended usage range is 0.5-4 µg per test. H_ACVR2B HEK-293(ACVR2A KO) Cell Line (Catalog # GM-C34942) was stained with Anti-ACVR2B hlgG1 Antibody(Fab-17G05) (Catalog # GM-82350AB) or isotype control antibody, followed by anti-Human IgG APC-conjugated Secondary Antibody.



SampleID	Geometric Mean : FL11-H
HEK-293 anti-ACVR2B+APC-2nd Ab	3556
HEK-293 H_ACVR2B(2A KO) H_IgG+APC-2nd Ab	2272
HEK-293 H_ACVR2B(2A KO) anti-ACVR2B+APC-2nd Ab	1.32E6

Flow cytometry

The recommended usage range is 0.5-4 μg per test. H_ACVR2A HEK-293(ACVR2B KO) Cell Line (Catalog # GM-C34941) was stained with Anti-ACVR2B hlgG1 Antibody(Fab-17G05) (Catalog # GM-82350AB) or isotype control antibody, followed by anti-Human IgG APC-conjugated Secondary Antibody.



SampleID	Geometric Mean : FL11-H
HEK-293 anti-ACVR2B+APC-2nd Ab	3198
HEK-293 H_ACVR2A(2B KO) H_IgG+APC-2nd Ab	2105
HEK-293 H_ACVR2A(2B KO) anti-ACVR2B+APC-2nd Ab	2097

Fig. FACS